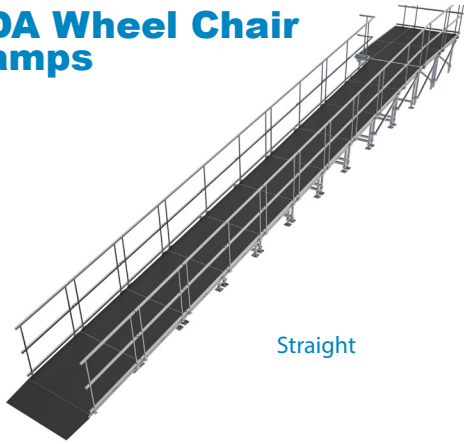


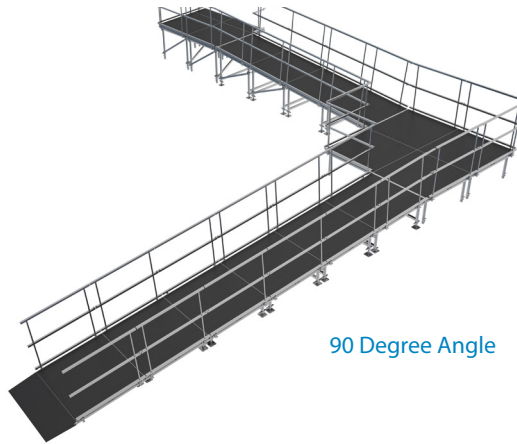


Universal Wheel Chair (ADA) and Equipment Ramps

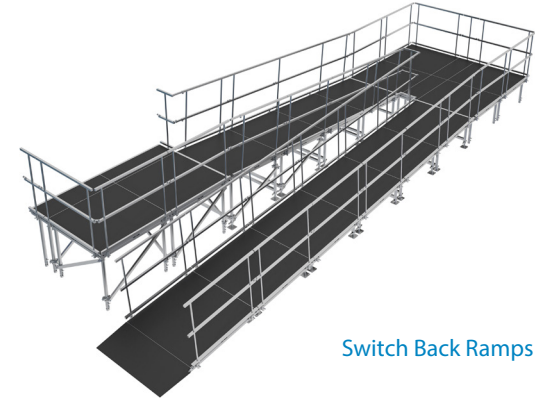
ADA Wheel Chair Ramps



Straight

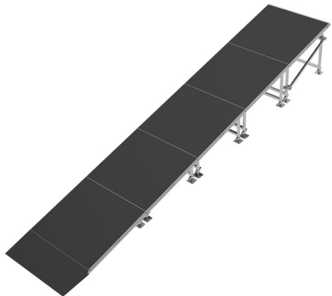


90 Degree Angle

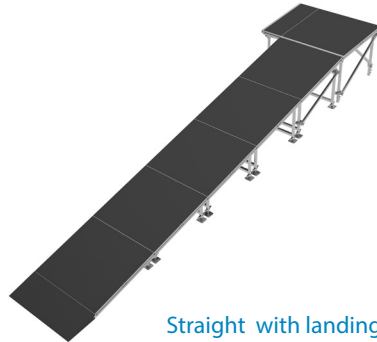


Switch Back Ramps

Equipment Ramps



Straight without landing

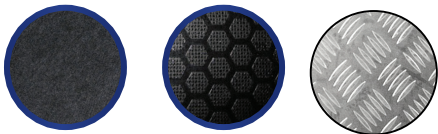


Straight with landing

Universal Ramps

- Wheelchair (ADA) and Equipment configurations up to the 48" (120cm).
- Metric and Imperial sizes are available.
- Available in three surface finishes: Gray Carpet, Industrial finish and Aluminum finish.
- Aluminum finish ramps are fully water proof and are suitable for permanent outdoor installation.
- Flexible and adjustable configurations fit a variety of different needs.
- Straight, 90 degree angle and switch back wheel chair ramp configurations are available.
- Equipment ramps with or without landings are available.
- Can be installation on leveled, flat ground surfaces and uneven surfaces.
- Universal design easily connects to the following stages; IntelliStage, Staging 101, Slim Folding Stage 101, All Terrain, ProFlex, FeatherLite, QuickLock and or fixed permanent structures.
- Ramps can be installed onto permanent structure (such as a house) using a custom designed adapter.
- Easy, fast and simple to install using standard QuickLock platforms and guardrails.
- Fast assembly and installation does not require any additional tools
- Custom ramp configurations can be created to fit your needs.

Weight rated at: 750 KG / SQ M (153 LBS /SQ FT).



Available in 3 surfaces, carpet, industrial and aluminum