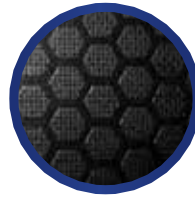


Panels, Legs, Guardrails, Skirts & Accessories



Available in industrial finish



Height adjustable legs



Stage panels



Guard rails



Adjustable and fixed stairs



New universal corner adaptors built into the panels allow you to use our square legs cut pipe and use pipe legs



Wheeled leg adaptors fit on stage legs to create mobile stages and drum risers!



Leg braces (which come with mounting brackets) are recommended to be installed on all stages higher than 36" (90cm) high to provide added stability



Stage leg clamps are used on all stages set up higher than 32" (80cm) or higher where 2 or 4 stage legs meet. This provides added strength and stability



Double assembly insert designed to attach guardrails, stairs and other accessories to stage



Panel Cart



Accessory case



Assembly insert designed to attach guardrails, stairs and accessories to stage



Insert used to level stage panels together



Guardrail mounting bracket connects guardrails together.



Clamp to connect stage panels together. Used underneath the pane



Guardrail/handrail assembly clamp attaches guardrail to stage.



Guardrail Trolley



Learn more, watch demo videos and build your stage online at [www.proflexstaging.com](http://www.proflexstaging.com)

## MONEY SAVING NEW DESIGN!

**NEW! STRONGER CHANNELLED PANEL DESIGN!**  
4' X 8' PANELS NOW ONLY NEED 4 LEGS INSTEAD OF 6!



TUV rated to the highest international safety standards



Can be set-up on curbs, slopes, hills, etc.

Super strong and stable!  
Perfect for dynamic activities such as dancing and jumping!



## ProFlex Staging

- Pro-Grade staging great for dynamic loads such as dancing or jumping.
- 10 year warranty
- Available in **Industrial Finish**.
- Modular, height-adjustable, telescoping leg staging system based on aluminium construction.
- Can be installed on flat as well as on uneven surfaces such as slopes, curbs, and hills.
- Available in metric and imperial sizes; **4ft x 8ft** or **1m x 2m**, **1m x 1m** platforms.
- Available with various heights of adjustable legs which can be set at heights ranging from **16" up to 78" (40cm to 200cm) high**.
- Universal leg corners allow you to use square or round cut pipe legs on the same platform. Perfect for production companies
- This system is designed for various events and concert markets.
- Stairs, guardrails, and transportation trolleys are available.
- Weight capacity: 153 lbs per sq. foot (750 KGS/sq. Meter).
- TUV rated at 500kg/m2 to comply with the highest safety standards